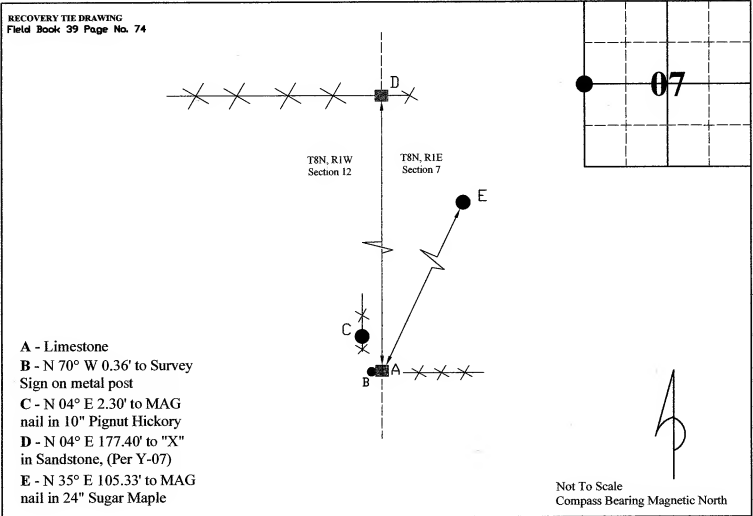


MONUMENT RECORD
State of Indiana - County of Monroe

Section: 7 **Township:** 8 North **Range:** 1 East **Corner ID:** SaCr A-07

Monument Description & Remarks: Limestone with "X", length 0.32ft, width 0.42ft, height 0.53ft. Survey Sign 3.5ft above ground at pt. B

References On File: Eric Lee Deckard survey, Moravec Boundary (2001), on file in Auditor Office and Surveyor Office



I, Kevin P. Enright, Monroe County Surveyor, hereby certify that this document was prepared under my direction in accordance with the provisions of ~~Section 2-12-11~~ 2-12-11 of the Indiana Code; and the above data is given under my hand and seal this 28th day of September, 2007.

Kevin P. Enright



Administered by the Monroe County Surveyor Review Board

Date: 11-13-2007